

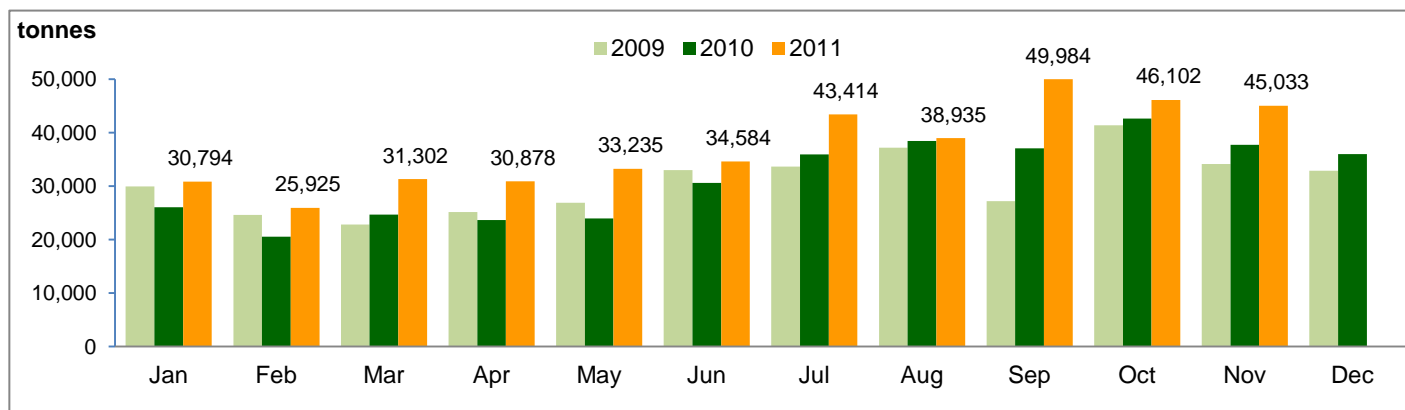


Monthly Production Highlights – November 2011

Production and Yields

		11M2011	11M2010	Change	Nov 2011	Nov 2010	Change
Production							
FFB Total	(tonnes)	1,722,634	1,437,178	19.9%	186,106	157,414	18.2%
Nucleus		1,566,232	1,313,218	19.3%	168,035	143,008	17.5%
Plasma		156,402	123,960	26.2%	18,071	14,406	25.4%
CPO	(tonnes)	410,186	340,969	20.3%	45,033	37,705	19.4%
PK	(tonnes)	94,104	77,455	21.5%	10,445	8,853	18.0%
Efficiency							
FFB Yield	(tonnes/ha)	20.1	18.3	↑	2.2	2.0	↑
CPO Yield	(tonnes/ha)	4.7	4.3	↑	0.5	0.5	-
CPO Extraction Rate	(%)	23.6	23.5	↑	23.8	23.6	↑
PK Extraction Rate	(%)	5.4	5.3	↑	5.5	5.6	↓

CPO Production Trend



	Jan	Feb	Mar	Apr	May	Jun	Jul	Aug	Sep	Oct	Nov	Dec
2010	26,004	20,503	24,625	23,634	23,941	30,587	35,925	38,398	37,018	42,630	37,705	35,953
2009	29,920	24,579	22,786	25,127	26,861	32,990	33,645	37,185	27,193	41,367	34,106	32,874

Notes:

Figures may not sum due to rounding

- FFB: Fresh Fruit Bunches
- CPO: Crude Palm Oil
- PK: Palm Kernel
- Nucleus: Plantations owned by the Group
- Plasma: Plantations developed by the Group for the benefit of smallholders. The Group buys FFB from these plasma plantations at prices determined by the Indonesian government.
- Yields: FFB Yield and CPO Yield are for the reported period and not annualised